

L. A. Cooke Jr.
HES - XVIII - 20 - 1

PROVIDENCE, R. I.
CITY ENGINEER'S OFFICE
STREET LINE DEPT.

Nov. 1, 1888
014435

Providence R.I.
This plat accompanies
our report of this date.
H. G. Mace

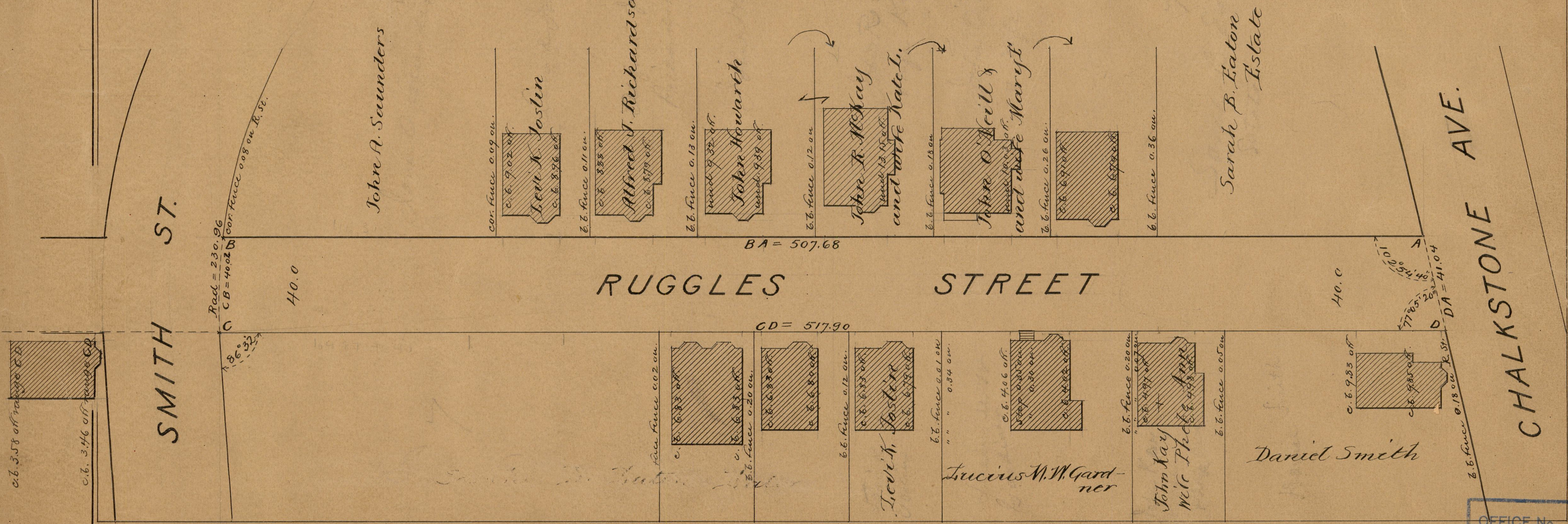
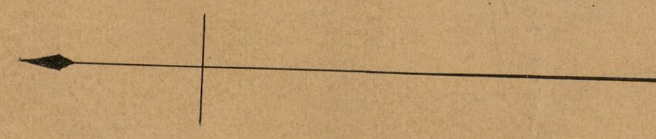
PLAT OF RUGGLES STREET

FROM CHALKSTONE AVE. TO SMITH ST.

SCALE 40 FEET PER INCH.

507.68
517.90

1025.58
512.79



OFFICE No. 9871
DRAWER 83
SHEET B-39